
ENLIGHTENED FEMININE LEADERSHIP

March 14 - 16, 2019
Suzhou, China



Quantum Leadership
21st Century
Organizational Excellence

A good leader is one, who by their presence, increases the capacity for excellence in others, so that this excellence continues in the presence or absence of the leader.

Women do this very well.

- John W. Maxwell



According to The Athena Doctrine:

How Women (and the Men Who Think Like Them) Will Rule the Future by John Gerzema and Michael D'Antonio, the following data was shared:

"We surveyed 64,000 people from 13 countries and asked this question:

"What is the fundamental Operating System of success in the 21st Century?"

Conclusion: 75% of those surveyed agreed that values associated with the Feminine, i.e. care, connecting, collaborating, inclusiveness, flexibility, listening, sharing, mutuality -- redefining success in every realm-- are what will determine success in the 21st century. The future is Feminine in men and women.

Enlightened Feminine Leadership prepares women (and men) to be successful in the 21st Century through the use of 'soft power,' relationships and holistic connections instead of separation and isolation.

DATE

March 14 Thursday – March 16 Saturday, 2019

LANGUAGE

Bi-lingual

FEE (TBD)

Program Fee includes tuition, course materials, food and beverage and accommodation of 2 evenings at SANGHA by OCTAVE. OCTAVE reserves the right to amend information of this program.



Enlightened Feminine Leadership

Introduction

Enlightened Feminine Leadership has been taught extensively in USA and through many parts of Brazil: Rio de Janeiro, Sao Paulo, Matutu, Brazilia, Florianopolis.

The curriculum of the program has been included in innovative educational and leadership initiatives since 2014 in the USA and Brazil.

Enlightened Feminine Leadership is one of the residential retreats under Quantum Leadership taught by esteemed business leaders and experts from the United States and Singapore.

This experiential retreat accelerates leadership and organizational change by introducing new skills and social technologies that focus on wholeness, connection and integral consciousness.

Program Objective

The purpose of this program is to equip leaders with an infallible process on bringing out the best from their teams and organization in a universal, collaborative manner. To be successful in our times, women leaders must become Game Changers in the arena of Disruptive Innovation. The three most important qualities of **Enlightened Feminine Leadership** that support disruptive innovation are:

1. The ability to create psychological safety in individuals and teams so all voices are welcome
2. The ability to use the powerful 'connective-edge' skill of turning teams into tribes and tribes into networks and networks into communities that create new realities
3. Commitment to invoking organizational fearlessness in welcoming future possibilities through the process of divergent thinking

Attending the **Enlightened Feminine Leadership** will jump-start these capacities through in-depth teaching of new skills in the categories of: **BEING, DOING** and **RELATING**. Through experience, theory and practical application, **Enlightened Feminine Leadership** supports leaders to bring "WHO they ARE into HOW they Relate and Lead."

Participants in the program will have the direct experience of the tools and embodiment processes of collective problem solving, creative relational intelligence, and using the human body as a resource in leadership. The resulting rapid and radical transformation ignited by **Enlightened Feminine Leadership** unleashes human potential to solve the complex challenges of these times.

On completion of the program, participants will experience a significant increase in their ability to:

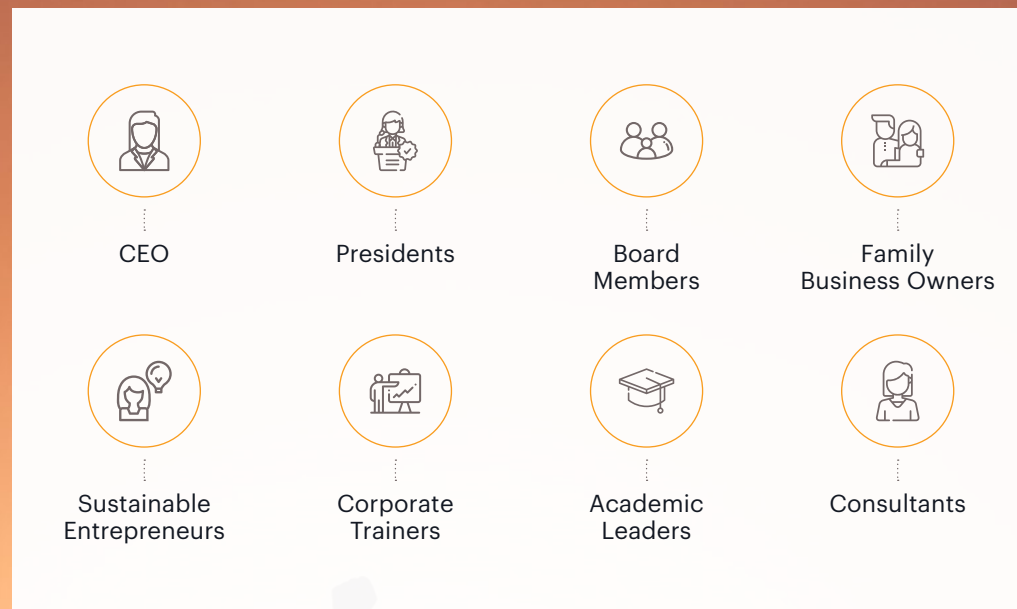
1. **Have Insight About What the Real Issues / Problems Are**
2. **Take Effective Action**
3. **Experience Nourishment**
4. **Welcome Rest and Receptivity to New Problems**

The program is designed to unlock participants' capacity to lead innovative changes in the world of VUCA, to excel despite fierce competition and to create responsible, respectable and sustainable businesses for our society.

Who Should Attend

Enlightened Feminine Leadership is crafted for global decision makers that lead entire organizations, divisions or large teams with profit and loss responsibilities on a strategic and day-to-day level.

Those who are dedicated to evolving themselves, their teams and their organizations against the backdrop of a complex business landscape should also consider joining.



Program Benefits

Participants will be best positioned to:

- Embrace Concentrated Clarity and Newfound Creativity
- Drive Collaborative Search for Strengths within The Organization
- Imagine New Possibilities for The Future
- Secure Engaged, Motivated and Committed Teams
- Co-design The Pathway to Changes and Innovation with All Stakeholders
- Establish Psychological Safety in Teams
- Cultivate "Fearlessness" in the Organizational Culture
- Shift "Fixed Mindset" Culture to a "Growth Mindset" Culture

Program Coverage

- **Enlightened Feminine Leadership** (What & Why)
- Balancing Autonomy and Belonging
- Listening to The Wisdom of the Body
- Cultivating a source of unlimited Energy
- The Sensitivity Cycle"
- Re-connecting People to their Uniqueness / Originality
- Rethinking How and Why Human Systems Change
- Embodying Fearlessness
- Building Trust, Expressing Truth
- Building Collective Problem-Solving Competency
- Stories of Change through Implementation of **Enlightened Feminine Leadership**
- BEING, DOING, RELATING: Triangle of Well-Being in the Business World.

Program Schedule

As this program is highly personalized to the group of participants that join, the detailed schedule will be released closer to the day of commencement.

Faculty



Mukara Meredith, MSW, Certified Hakomi Trainer
MatrixWorks Creator, Teacher and Trainer Boulder, CO
USA

Working with Groups as Living Systems, has worked in large and mid-size corporations since 1999. Her clients have included Mattel Toy, General Mills, G.E., Proctor and Gamble and Finaxis Bank. Since 2015, she has worked extensively in Brazil and China.

Mukara has 40 years of experience teaching, consulting and working in the Healing Arts. Her work has been taught at Naropa University in both Somatic Psychology and Resilient Leadership departments

She is committed to creating new cultures of creativity, connection and innovation through enhancing the relational matrix of small groups. She teaches teams to access collective intelligence and to practice the skills of collaboration, chaos and diversity within unity. Her book, Matrixworks: A Life Affirming Guide to Facilitation Mastery and Group Genius has been translated into Portuguese and Spanish

Mukara's life-work has been devoted to bringing human friendly values into businesses and organizations to ensure meaningful work, marketplace success and organizational integrity. She feels nothing is more important in the 21st century than our personal and collective Evolution. Deeply committed to living awake in the world, Mukara's teachings invite the healing of our Shadows and encourages the 'connecting of the disconnected' within and between us.

Presently she is focusing on a specialty class she has created called:
"Enlightened Feminine Leadership: Using Soft Power to change the World."
This work is taught in USA and Brazil and will be offered in China in 2019.

Mukara believes that the changing role of women in leadership in the 21st century is one of the most vital, positive shifts happening globally and she wants to serve this purpose.





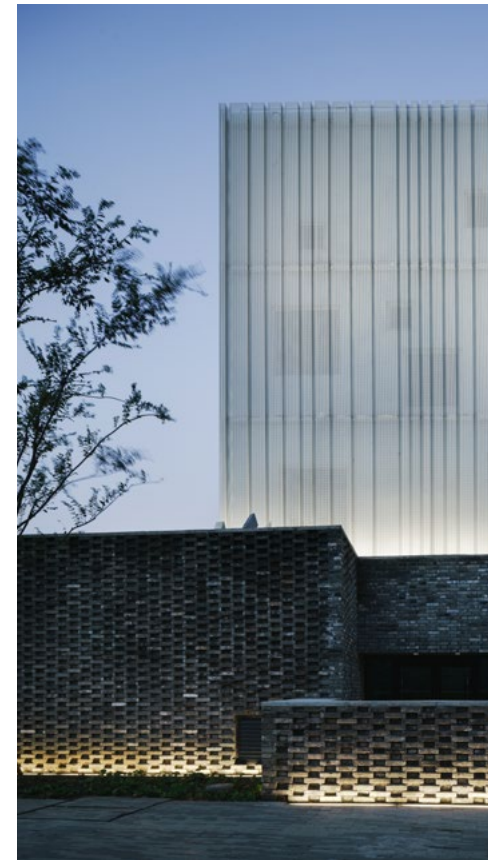
SANGHA by OCTAVE

SANGHA by OCTAVE is a mere 1.5 hours away from Shanghai.

As an immersive ex-urban retreat location in Suzhou, SANGHA is surrounded by water where ancient Wu culture first started. Suzhou is a symbol in China for the artistic, cultural, sophisticated and mindful lifestyle.

SANGHA spreads over 189,000 square meters of lake-front peninsula on Suzhou's Yangcheng Lake. It is a place for mindful learning designed to enhance your connection with yourself, with others and with nature.

SANGHA is the distillation of decades of reflection by OCTAVE's Founder & CEO Chavalit Fred Tsao and is viewed by him as "an expression of a world-view where evolution is supported, and where consciousness can shift to embrace wholeness and connectedness."



SANGHA is an integrated complex of wellness residences and learning facilities consciously created by master architect Calvin Tsao to be the embodiment of a vision of how such a community might work.

One of the spaces within SANGHA - **The Sanctuary** - has won numerous architectural awards for its stunning design, elaborate interiors and exteriors, including UK Blueprint Awards, 2017 APIDA, the A&D Trophy Awards.

Built with natural materials, OCTAVE's aesthetics and design choices for SANGHA re-think the whole idea of space utilization, reconsidering the balance between personal space and communal space, to create a greater sense of closeness, of community.

For Inquiries, Please Contact:

Margie Chiang
 Director, Business Development of OCTAVE
margiechiang@livingoctave.com

Zhu Yiyi
 Manager, Business Development of OCTAVE
zhuyiyi@livingoctave.com

一个好的领导者
能以身作则带领身边的人
不断进步，
使得领导者离开后，
团队仍能保持优秀。

女性在这方面做得非常好

- 约翰·W.麦克斯韦尔

在约翰·格则马 (John Gerzema) 和迈克尔·丹东尼奥 (Michael D'Antonio) 的作品《雅典娜主义：女性（以及像她们一样思考的男人）将如何统治未来》中，作者分享了以下数据：“我们调查了来自13个国家的64,000人，并向他们抛出这个问题：‘在21世纪，成功最基本的要素是什么？’

结论是75%的受访者认为21世纪决定成功的基本要素与女性特质相关，这些要素包括关怀、联系、协作、包容、灵活、倾听、分享和相互联结，这些要素将重新定义各个领域的成功

未来取决于所有人性格中的女性特质。**开明的女性领导力**通过使用“软实力”、关系和整体联系，而不是分离和孤立，帮助女性（和男性）在21世纪获得成功。

日期

2019年3月14日（周四） - 3月16日（周六）

语言

中英双语

费用（详情请致电咨询）

课程费用包括学费、课程材料、餐饮以及在音昱水中天两晚的住宿。音昱保留修改项目信息的权利。



开明女性领导力

项目介绍

开明女性领导力项目已在美国和巴西的许多地方广泛开展，包括里约热内卢、圣保罗、马图图、巴西利亚和弗洛拉诺波利斯。自2014年以来，该项目的课程已被纳入美国和巴西的创新教育和领导力计划。

开明女性领导力是量子领导力的项目之一，由来自美国和新加坡著名的商业领袖和专家讲授。该体验式项目通过引入专注于整体性、联系性和整体意识的新技能和社会技术，加速领导力和组织变革。

项目宗旨

为了在这个时代取得成功，女性领导者必须成为颠覆性创新领域的规则改变者。

开明女性领导力支持颠覆性创新，其中三个最重要的品质是：

1. 能够在个人和团队中创造心理安全感，使得所有人都能尽情发表意见
2. 能够利用强大的“连接优势”技能将团队变成部落，并从部落变成网络，再从网络转变为创造新现实的社区
3. 通过发散思维，激发组织无所畏惧的勇气，拥抱未来的无限可能

通过深入教学“做人、做事和人际互联”的新技能，开明女性领导力项目将激发上述能力。通过经验、理论和实际应用，开明女性领导力项目能够使领导者“将个人特点融入他们的人际沟通和领导中”。

该项目的参与者将直接体验集体问题解决、创造性人际智慧和从人体自身汲取领导力这几项工具与它们的应用。开明女性领导力将推动快速和激进的转变，从而释放人类解决时代复杂挑战的潜力。

完成该课程后，参与者的以下能力将大幅提高：

1. 了解真正的问题是什么
2. 采取有效的行动
3. 吸收高价值的内容
4. 学会放松和包容以应对新问题

该计划旨在释放参与者引领不稳定世界 (VUCA) 创新变革的能力，在激烈的竞争中脱颖而出，并为我们的社会创造负责任、值得尊敬和可持续的业务。该计划的目的是为领导者提供一个正确的流程，以通用和协作的方式确保团队和组织中发挥最大作用。

我应该参加吗?

开明女性领导力是为全球决策者精心设计的，他们在整体战略和日常工作上领导整个组织、部门或大型团队的盈亏责任。

那些致力于在复杂的商业环境背景下发展自己、团队和组织的人也应该考虑加入。



项目效果

参与者将：

- 获得清晰的注意力，并发现新的创造力
- 推动组织内部优势的共同发现
- 想象未来新的可能性
- 确保团队参与度高、积极主动和忠诚
- 与所有利益相关者共同设计变革和创新的途径
- 建立团队的心理安全感
- 培养组织文化中的“无所畏惧”
- 将“固定思维”文化转变为“增长思维”文化

项目学习内容

- 开明女性领导力(是什么和为什么)
- 平衡自主权和归属感
- 倾听身体的智慧
- 获得源源不断的精力
- 灵敏度周期
- 重新将人们与他们的独特性 / 原创性联系起来
- 重新思考人类系统变化的方式和原因
- 体现无所畏惧的勇气
- 建立信任, 表达真理
- 培养集体解决问题的能力
- 实践开明女性领导力的变革故事
- 做人、做事和人际互联: 商业世界的幸福三角。

项目日程

由于该计划具有高度的针对性和个性化，课程安排将在项目开始前发布。

讲师



穆卡拉·梅雷迪思, 社会工作硕士学位,
是认证哈科米治疗师和培训师, MATRIXWORKS
美国

“团队合作生活系统”的创始人和开发人员, 自1999年以来一直在大中型企业工作。她的客户包括美泰玩具 (Mattel Toy), 通用磨坊 (General Mills)、通用电气 (GE)、宝洁 (P&G) 和 Finaxis 银行。自2015年以来, 她在巴西和中国开展了广泛的工作。

穆卡拉拥有40年治疗艺术的教学、咨询和工作经验。她的作品已被那洛巴大学的体细胞心理学和弹性领导部门作为教材传授。

她致力于通过增强小团体的关系矩阵, 创建有创意、联系和创新的新文化。她教授团队如何获取集体智慧, 并统一练习协作、混沌和多样性方面的技能。她的书《矩阵网络: 促进掌握和群体天才的积极生活指南》已被翻译成葡萄牙语和西班牙语。穆卡拉的一生致力于将人类友好的价值观带入企业和组织, 以确保工作的意义、市场的成功和组织的完整性。她觉得21世纪没有什么比个人和集体的进化更重要了。穆卡拉致力于在世界范围内推广有觉知的生活, 穆卡拉的教导使我们治愈心理阴影, 并鼓励我们“重连”内部身心关系和外部人际关系。

目前, 她专注于她所创建的专业课程: “**开明女性领导力**: 利用软实力改变世界。”该项目在美国和巴西开展, 并将于2019年在中国开设。穆卡拉认为, 女性领导的角色转变是21世纪全球最重要、最积极的变化之一, 她希望为此做出贡献。



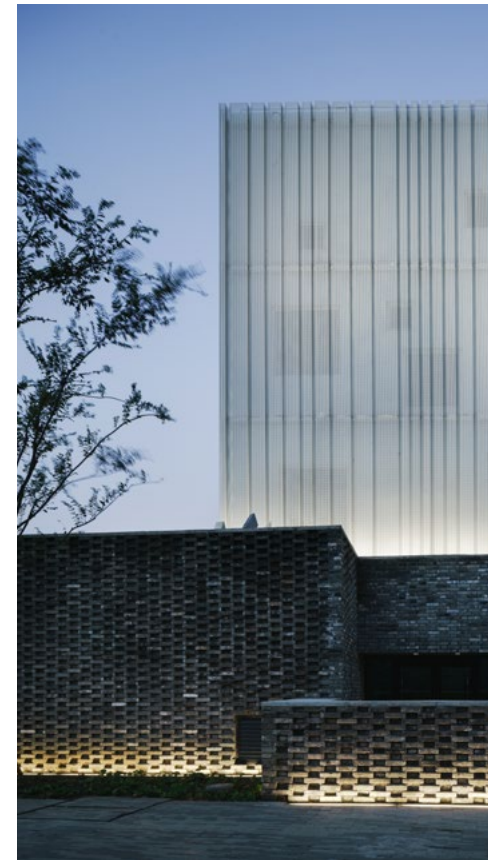


音显水中天

音显水中天距离上海仅1.5小时车程。作为一个沉浸式城市远郊养生憩所，音显水中天四面环水，坐落于古老的吴文化起源地——苏州，该地是中国传统艺术、文化、及东方生活方式的代表。

音显水中天位于苏州阳澄湖上的湖畔半岛，占地189,000平方米。您可在此正念学习，加强与自己、他人和自然的联结。

音显水中天是曹慰德先生数十年思考的精华，他称其为“一种世界观的表达，这种世界观支持人们洞见并实现真我人生”。



音显水中天是由建筑大师曹慰祖 (Calvin Tsao) 携手众多知名建筑师匠心打造的养生社区和学习空间的综合体，是对正念生活和幸福成长愿景的体现。

其中，由如恩设计的典礼堂，以其独特的设计风格及精致的室内外装饰赢得了众多建筑界的奖项，包括：2017年英国的Blueprint Awards蓝图设计大奖，2017年APIDA亚太室内设计大奖，与2017年A&D Trophy Awards设计大奖等殊荣。

音显水中天以纯天然材料建造。它独特的美学设计重新定义了空间利用的概念，重新平衡了个人空间与集体空间的关系，从而创造更具亲和力的社区感。

更多详情请咨询：

Margie Chiang
商务拓展总监
margiechiang@livingoctave.com

Zhu Yiyi
商务拓展经理
zhuyiyi@livingoctave.com

Take A Note
记录页



开明女性领导力

3月14日 (周四) -

3月16日 (周六)

2019年



量子领导力
成就21世纪卓越管理